

Opdracht 8

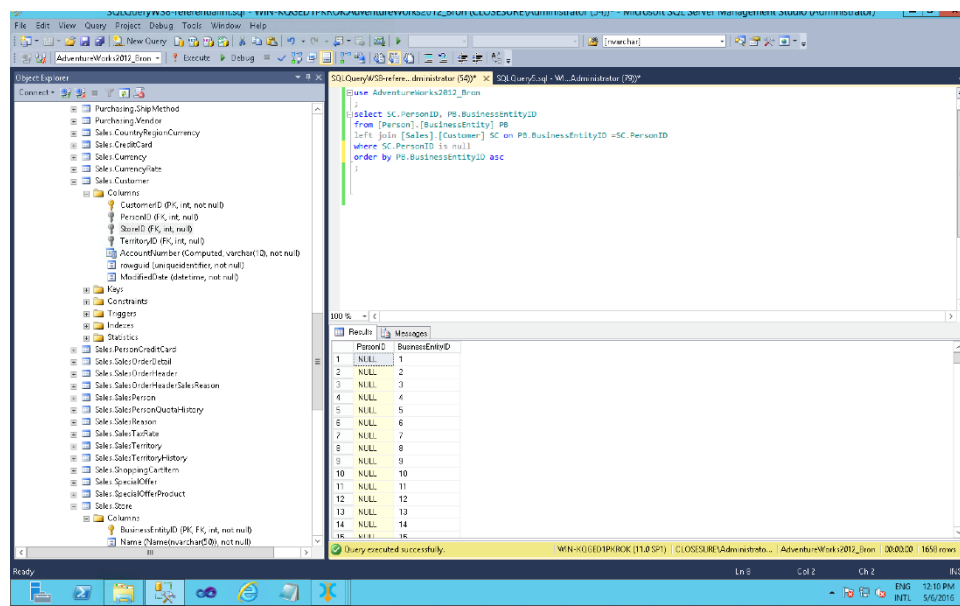
Eén van de opdrachten die een tester in een Datawarehouselandschap regelmatig krijgt, is het vaststellen of aan de regels van referentiële integriteit wordt voldaan.

Er bestaat een relatie tussen tabel Sales.Customer (PK PersonID) en de tabel Person.BusinessEntity (PK/FK BusinessEntityID). Hiervoor geldt dat er voor elke bestaande Person.BusinessEntity (contact) een voorkomen aanwezig moet zijn in de tabel Customer (klant).

Stel vast door gebruik te maken van een SQL query of de referentiële integriteit tussen deze 2 tabellen correct wordt gehandhaafd.

Taak 8a) Analyse met hulp van SQL

```
use AdventureWorks2012_Bron
;
select SC.PersonID, PB.BusinessEntityID
from [Person].[BusinessEntity] PB
left join [Sales].[Customer] SC on PB.BusinessEntityID =SC.PersonID
where SC.PersonID is null
order by PB.BusinessEntityID asc
;
```



The screenshot shows the SQL Server Enterprise Manager interface. The left pane displays the 'Object Explorer' with the 'AdventureWorks2012_Bron' database selected. The right pane shows a SQL query window with the following query:

```
use AdventureWorks2012_Bron
;
select SC.PersonID, PB.BusinessEntityID
from [Person].[BusinessEntity] PB
left join [Sales].[Customer] SC on PB.BusinessEntityID =SC.PersonID
where SC.PersonID is null
order by PB.BusinessEntityID asc
;
```

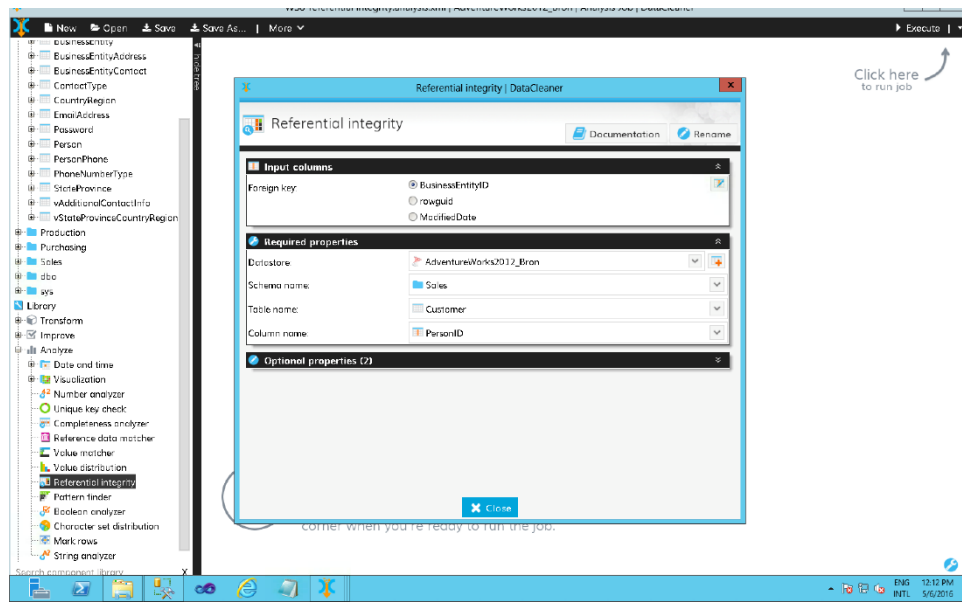
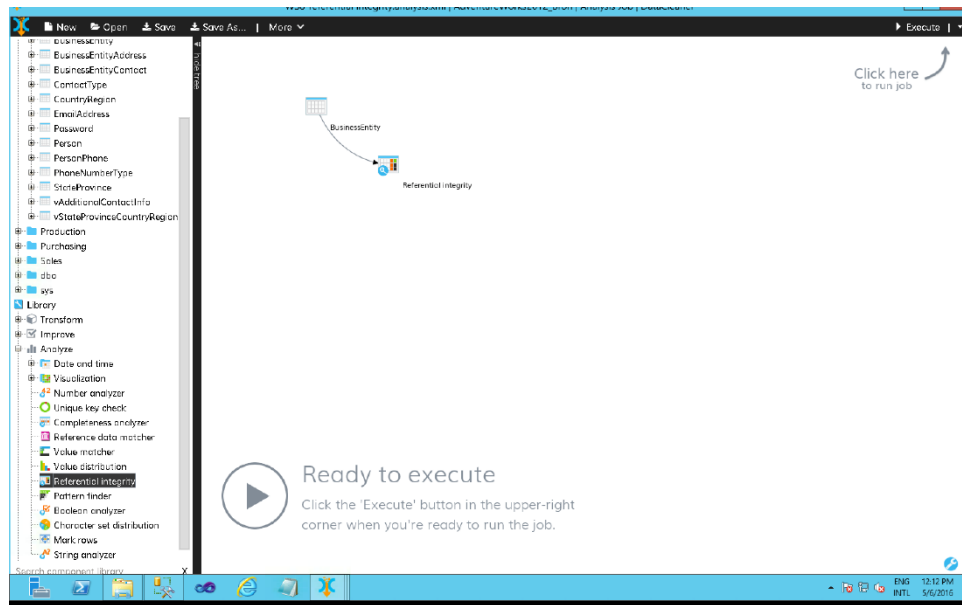
Below the query window, the 'Results' pane displays the output of the query:

PersonID	BusinessEntityID
1	1
2	2
3	3
4	4
5	5
6	6
7	7
8	8
9	9
10	10
11	11
12	12
13	13
14	14
15	15

The status bar at the bottom indicates 'Query executed successfully' and '1658 rows'.

<1658 rijen>

Taak 8b) Analyse met hulp van DataCleaner



Analysis results | AdventureWorks2012_Bron | WS8-referential integrity.analysis.xml

Referential integrity

Progress information

Referential integrity

Records with unresolved foreign key values (1658)

View detailed rows

Save dataset

	BusinessEntityID	rowguid	ModifiedDate
1	0C7D8F81-47B1-4CFD-8CDA-4CD86B50087		2012-01-14 13:20:24.15
29	225F6245-9F6B-44D0-B705-AA0EDC677FE		2012-01-14 13:20:25.977
28	EE7F33EF-377F-47DA-9833-37FAF98FAF8		2012-01-14 13:20:25.9
32	AC238F3C-275B-4DE5-860E-98807873236D		2012-01-14 13:20:26.1
27	F44E689F-486E-4652-A963-45134500F655		2012-01-14 13:20:25.85
34	9493279D-1D6B-4327-8B8F-4709F3D798C9		2012-01-14 13:20:26.197
36	67356DD0-8E9D-4256-83D3-629EC1788737		2012-01-14 13:20:25.92
35	2F51EE68-5842-4992-873D-E1EE9BA698F		2012-01-14 13:20:26.29
26	97447E18-4812-4737-88F7-A0DCFIAD185C		2012-01-14 13:20:25.773
38	5AD7C51D-06FC-46EB-ASA1-14A4E1719D5A		2012-01-14 13:20:26.383
34	70CD83CB-ABED-48D0-8735-76DD34EC114F		2012-01-14 13:20:25.727
40	7E972571-4349-4CE1-9325-62CC339DF648		2012-01-14 13:20:26.477
23	A1A1E909-83A7-40F4-98F5-6B0B2CA778CB		2012-01-14 13:20:25.68
42	A03E96BD-1CA2-419C-AF1E-2E4E85E6D146		2012-01-14 13:20:26.57
21	11E4F0C7-D6E7-41EE-BAED-8AD7D052E378		2012-01-14 13:20:25.553
44	D5704096-1269-4E42-ED97-8632588FC07E		2012-01-14 13:20:26.583
22	F99503CE-9F5B-4D9D-94E7-A14BD1D4A3E4		2012-01-14 13:20:25.517
46	D840B17E-99D3-40FB-A3FC-19544474B75B1		2012-01-14 13:20:26.76
20	86A4CF13-3DAD-496B-E1F7-37B990EF7EE8		2012-01-14 13:20:25.493
48	D849CC85-3507-4C0C-93D0-D94CE7CCACD1		2012-01-14 13:20:26.85
19	5058EDCA-35D7-4AF4-ABF2-3DF8AFF699DF		2012-01-14 13:20:25.447
30	81D16571-ED2C-4F76-90DC-2D97765710BF		2012-01-14 13:20:26.93
18	3D1054EA-9EDC-47D4-EBD1-8DDEE189EAD7		2012-01-14 13:20:25.4
32	C1B94F32-642C-4FE7-A0FE-FOC6D4755A19		2012-01-14 13:20:27.022
17	AS1C9689-FA2E-4162-8CAD-E2800471221A		2012-01-14 13:20:25.35
34	85B16355-0235-4695-A513-C750AC3509E8		2012-01-14 13:20:27.117
16	BC224F3F-1776-45D8-991A-B2F2F810F39A		2012-01-14 13:20:25.133
36	129EF71D-7FB3-4AE8-9868-8C856DD0652F		2012-01-14 13:20:27.21

<1658 rijen>